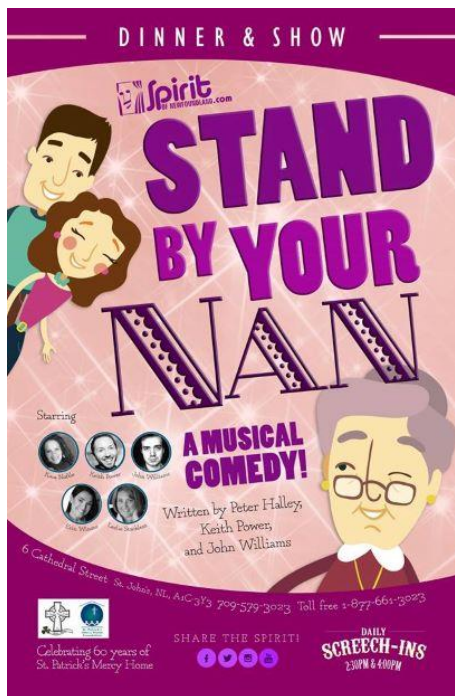


St. Patrick's Mercy Home Foundation Newsletter Fall 2018

60th Anniversary Celebrations

As we approach the culmination of our 60th Anniversary celebrations here at St. Patrick's Mercy Home, it is wonderful to reflect on all the events and activities that have occurred during the past year. From our Opening Reception to the "St. Pat's Moment", to the Fashion Show and Anniversary Socials, to the Sisters of Mercy Appreciation Social and Staff Appreciation BBQ's it has been a wonderful year. Special shout-out to the 60th Anniversary Committee under the tremendous leadership of chairperson, Joyce Penney, and all the staff, volunteers and supporters who have made this a year to remember.

Musical Comedy



St. Patrick's Mercy Home Foundation in partnership with Spirit of Nfld. Productions produced a show about the past, and the present of SPMH appropriately named "Stand By Your Nan". Spirit of Nfld. is renowned for its creativity and professionalism and this is a show that you will not want to miss. The show has played to fantastic reviews all summer as one of the featured shows for the tourist season.

Our Dinner and Show slated for November 1st is "SOLD OUT". If you want to see the show on another occasion, contact Spirit of Nfld. at 709-579-3023.

Variety Show

On Thursday, May 3rd we hosted our 2nd Annual Variety Show with performances by residents, Mary Kieley, Georgina King, Carrie Collins, Ethel Picco, & The St. Pat's House Band (Gerald Hartery, Clarence Barfoot, Brad Bradbury, Frank Parsons, Dr. Charles Boddie, Shirley Ryan, Carol Earle, Eileen Bradbury). Solo performance by Harrison Best with special guests Aubrey Lynch, Dave Paddon, Mewsical Dancers, Portugal Cove Lancers and The Ryan Family In addition, SPMH staff performed a hilarious skit titled "Sleevens".



Special thanks to the Music Therapy and Recreation Therapy departments for all their assistance. This event would not have been possible without their support and coordination. In addition, thanks to all staff for your support in all the functions that SPMH Foundation undertakes.

Humour Corner

What is placed on the table cut and passed but never eaten? - A deck of cards.

What is lighter than a feather, but hard to hold?
- Your breath

What occurs twice in a week, once in a year and never in a day? - The letter "E"

Did you hear about the kidnapping in the park?
- They woke him up ☺

Who is the sister-in-law of your dad's only brother? - your mom

Golf Tournament

St. Patrick's Mercy Home Foundation hosted a golf tournament at Bally Haly Golf Course on September 27, 2018. The event was a tremendous success with over twenty teams participating, including two teams from the staff of St. Patrick's Mercy Home pictured below.



SPMHF would like to acknowledge the fantastic support we received from the community. Special thanks to our Platinum Sponsor, Martek Morgan Finch, our Gold Sponsor CIBC, and our Signage sponsor EC Boone. All of our sponsors are displayed below:



Linda Roberts, Terra Nova Golf Resort, Steele Hotels, St. John's Edge, Nfld. Growlers, Molson, Sobeys, Paradise Esso, Terra Nova Foods, Starbucks, Chris Vardy,

Given the overwhelming positive feedback for this event, we are considering making this an annual event.

Upcoming Events in Support of St. Patrick's Mercy Home

June 27, 2019 (Tentative) - Surf or Turf at Columbus Hall

This is our fourth annual Surf or Turf. Attendees had a great time last year. Come join us for a wonderful night of food, entertainment and friends. Prizes to be won - Don't miss out

October 24, 2019 (Tentative) - Dinner Theater & Silent Auction - Spirit of Newfoundland - Masonic Temple

This will be our 20th performance in partnership with Spirit of Nfld. An annual event for the Foundation and its success is a result of the tremendous support we receive from residents' family members and friends, as well as the fabulous support we receive from the community and staff of St. Patrick's Mercy Home.

Over \$1,000,000 Contributed

To date St. Patrick's Mercy Home Foundation has contributed \$ **1,203, 946.75** to the residents of St. Patrick's Mercy Home. These contributions have included, but not limited to:

- Wheel Chair Bus
- Palliative Care Rooms
- Third Floor Lounge
- Third Floor Family Suite
- Multiple Ceiling Lifts
- New Furnishing for all Floors
- Christmas Gifts for all Residents

You can now donate Online

Donations in support of St. Patrick's Mercy Home can now be made online by using the secure website offered by CandaHelps.org.



Visit our website!

<http://www.spmhf.nl.ca>

Why not make St Patrick's Mercy Home

~Your Charity of Choice~

Creating a Home away from Home!